

# Gas Detection Camera

Your investment in profitability and safety.



Tracing gas leaks using modern infrared technology: The gas camera reveals things that would otherwise remain invisible to the human eye. SYSTEMTECHNIK WESER-EMS provides a reliable and cost-effective solution for the productivity and safety of biogas plants. Even the smallest gas leaks can be localized, documented, and the causes remedied in good time.

## Your benefits at a glance:

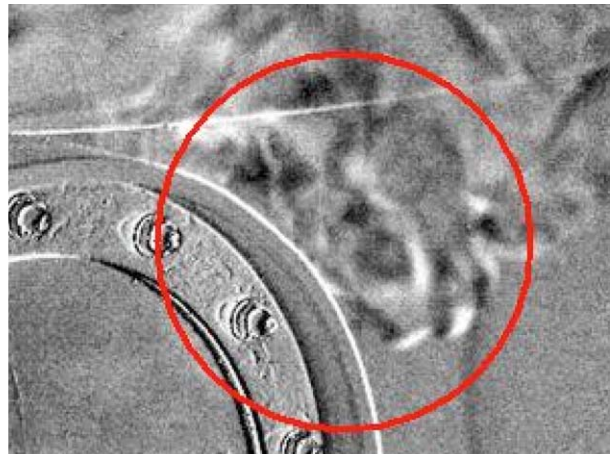
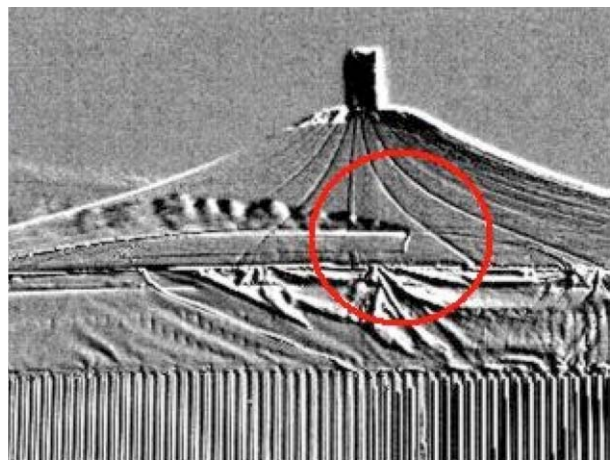
- Rapid and reliable detection of gas leaks
- Prevention of hazardous emissions and risks
- Ready for call out throughout Germany 24/7 = high system availability
- Reasonably priced offers for recurrent tests

Minimize the risk of expensive interruptions and boost your profit. Because measurements with the gas camera are possible while operation is in progress. Large plant areas and long pipes can be tested quickly and efficiently. And the results can be viewed straightaway.

- For biogas plants including fermenters, feeding units, secondary fermenters
- Pipes, connections and safety devices
- Natural gas tank farms, the chemical and petrochemical industry

Ready for call out throughout Germany 24/7 – **Our emergency number: +49 (0)4222 - 70 999**

Typical results achieved by the gas camera:



Escaping gas is displayed as a dark smoke trail on the screen of the gas camera. That means leakages can be detected in real time and archived as a film sequence or digital image. For documentation, repair instructions or preventative maintenance. SYSTEMTECHNIK WESER-EMS gives you a clear view of things – certified, flexible and reliable.

SYSTEMTECHNIK WESER-EMS | Mühlenstraße 17 | D-27777 Ganderkesee  
Telefon +49 (0)4222 - 70 999 | Fax +49 (0)4222 - 70 444 | E-Mail info@syswe.de

[www.syswe.de](http://www.syswe.de)